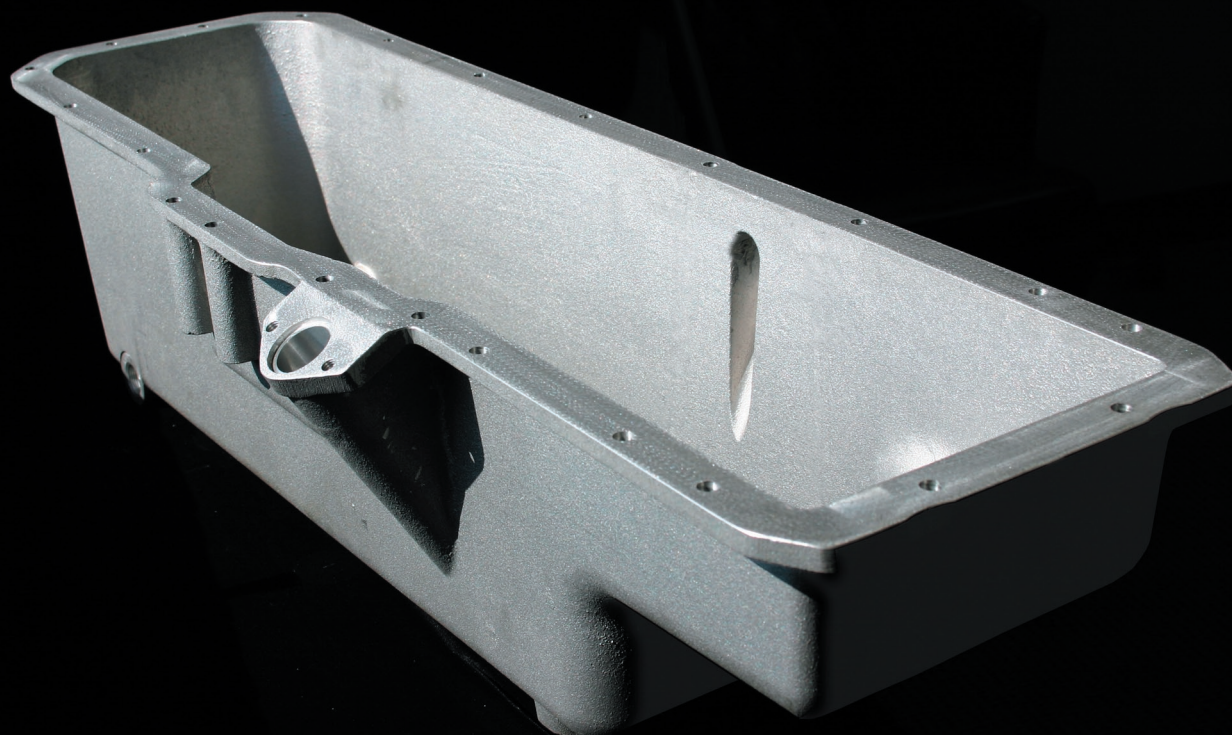


NEW PRODUCT

ARROW ENGINE NOW OFFERS OUR
HIGH CAPACITY OIL PAN



217014HC-KIT

217014HC	HIGH CAPACITY OIL PAN	1
A208481A	OIL LEVEL DIPSTICK	1
157497X	O-RING FOR DIPSTICK	1
7A-5/1618X7/8	SCREW, 5/16" - 18 7/8"	1
208626A	OIL PAN GASKET	1
76909	DRAIN PLUG	1
B175	GASKET, DRAIN PLUG	1
7A-5/1618X1	SCREW, HEX 5/16" - 18 X 1"	19
26125	SCREW, HEX 5/16" - 18 X 3/34"	3
1N-5/16	WASHER, PLAIN 5/16"	22
1A-5/16	WASHER, LOCK 5/16"	22
6408-06	PLUG FOR OIL PAN REGULATOR	1
6408-10	PLUG FOR OIL PAN REGULATOR	1

- Oil capacity increased from 8 quarts to 17.6 quarts
- Aids in heat dissipation
- Better control of suspended particles
- Additional capacity available if required with Saddle Tank Assembly (VR-ST-OP)
- Up to 30 quarts engine capacity

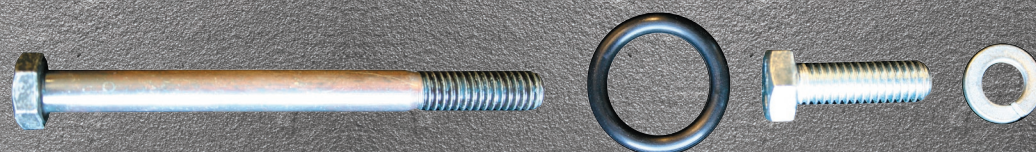
Arrow Engine Company
2301 E. Independence, Tulsa, OK 74110

TOLL FREE 800.331.3662

Local 918.583.5711

Fax 918.388.3204

Copyright May 2005



Check for new products, catalogs, manuals
and more at www.arrowengine.com