

STARTING the K-SERIES ENGINE

MOUNTING THE ENGINE:

- 1.) Make sure all frame rail bolts are secured.
- 2.) Belt alignment and tension should be checked after installation.
- 3.) Check for proper balance of the pumping unit - 250 RPM variance between loaded and unloaded or less.

FUEL SYSTEM:

- 1.) Check for adequate fuel supply and pressure. (2oz.- 4oz)
- 2.) Make sure your fuel regulator is up stream of the volume tank and that your volume tank is of adequate size.
- 3.) Fuel adjustment can be made after start-up at the fuel regulator or at the power valve on the carburetor.

COOLING SYSTEM:

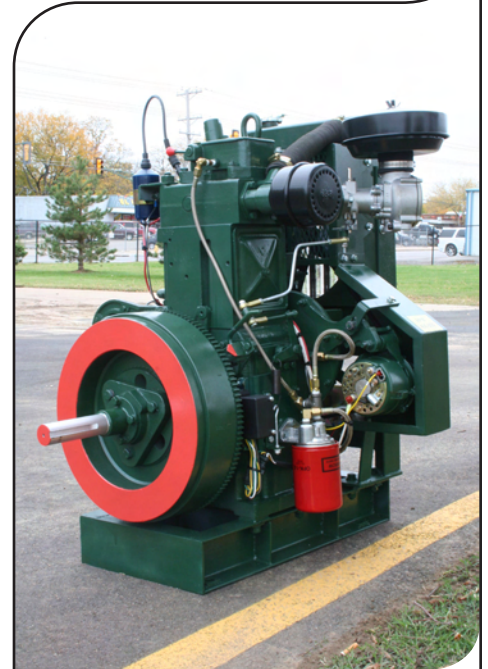
- 1.) The K6 cooling system is a thermo-syphon type system.
- 2.) Fill radiator with 50/50 pre-mix antifreeze to the full mark on front of radiator.
(Caution should be used not to overfill the radiator as it will cause overheating.)

NORMAL START-UP:

- 1.) Check governor for proper adjustment so that engine will start at an idle. (400 – 500 rpm)
- 2.) Check engine oil for proper level.
- 3.) Check engine coolant for proper level
- 4.) Start engine and verify oil pressure.
- 5.) After initial start-up all engine kills should be tested for proper operation.
- 6.) Increase engine speed and begin applying the expected load to the engine.
(Do not exceed 800 rpm)
- 7.) Monitor engine conditions for normal operational status.

CHECKS AND MAINTENANCE:

The personnel responsible for maintenance on the unit should after initial startup, determine the specific requirements for the application and establish a preventative maintenance program and scheduled checks accordingly.



Arrow Engine Company

2301 E. Independence
Tulsa, OK 74110
Toll Free 800.331.3662
Local 918.583.5711
Fax 918.699.2204
Toll Free Fax in US & Canada
800.266.1481
www.arrowengine.com
KQRf07a
© Arrow Engine Co. July 2007