



# ARROW GENSET

CONTINUOUS CATHODIC PROTECTION

# ARROW GENSET

CONTINUOUS CATHODIC PROTECTION



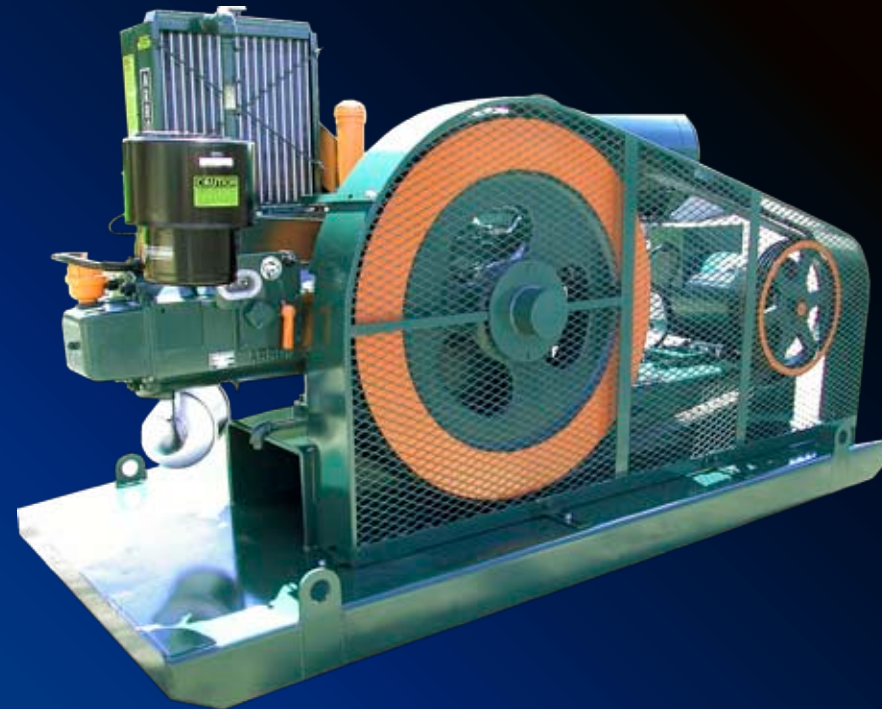
### WHAT IS CATHODIC PROTECTION?

Cathodic Protection is providing an electrical current to reduce corrosion of metal structures in soil. Gas and oil professionals around the world know that corrosion is a real concern. If the countless miles of pipeline were not protected, the threat of leakage or failure would be greatly increased.

In the United States, the D.O.T. Office of Pipeline Safety states that pipelines operating at certain pressures must have cathodic protection installed. In the corrosion process minute metal particles are carried from the pipeline by a natural current flow, which causes pitting that weakens the pipeline and could result in leakage or pipeline failure. The installation of a cathodic protection system reduces or eliminates corrosion.

### ARROW HAS THE ANSWER

The Arrow Engine Company has a solution to the problem of cathodic protection for remote site locations along gas pipelines. Arrow single cylinder generators "the Arrow GENSET" can be strategically placed along the pipeline, using pipeline natural gas to fuel the GENSET generating the D.C. current onto the pipeline structure. This process of cathodic protection reduces the deterioration of pipelines that carry millions of cubic feet of gas daily.



C-46 GENSET-AC 5KW

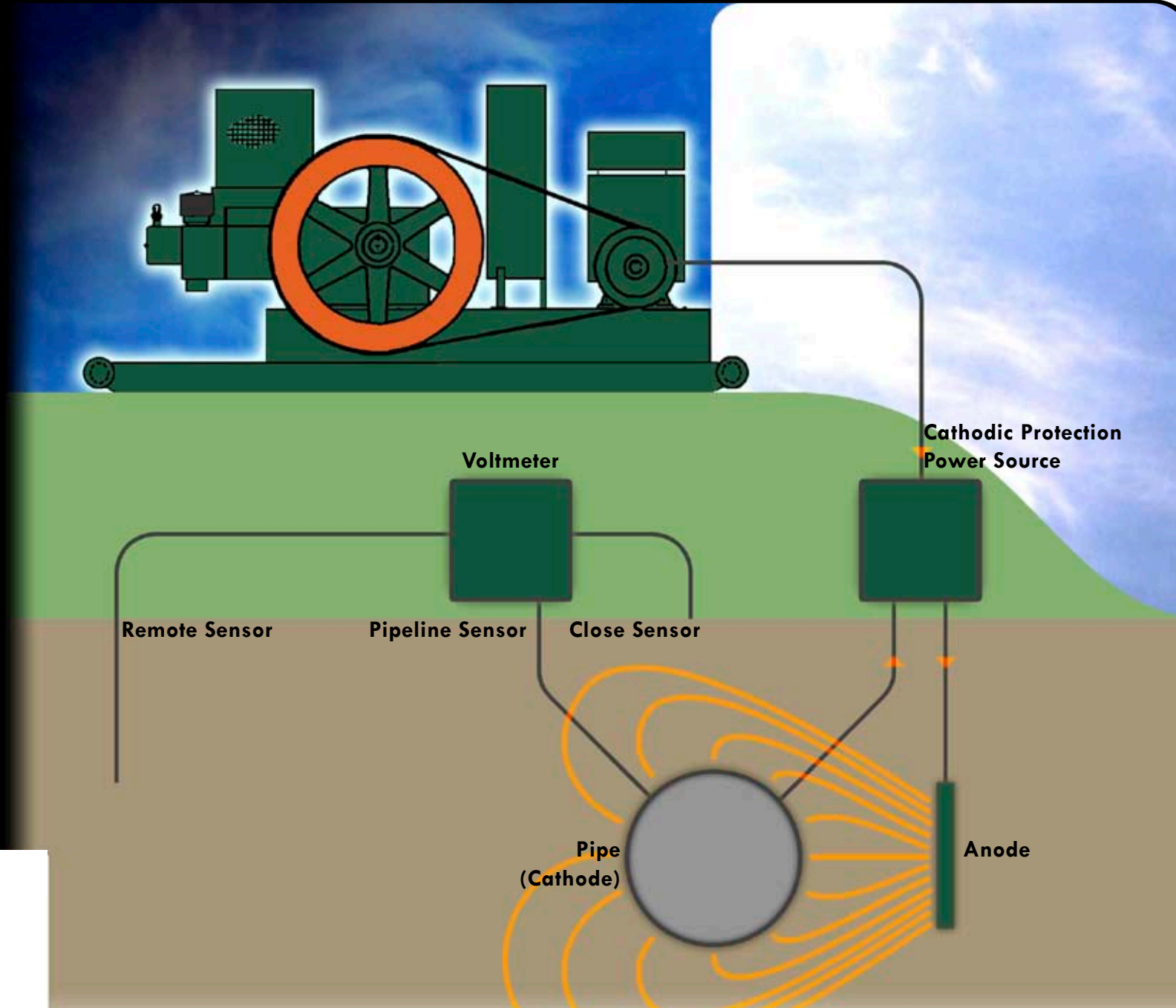
### CURRENTLY IN USE

One user of the Arrow GENSET is located near Brookville, Pennsylvania and has 50 percent of the 720 miles of pipeline in this system that requires cathodic protection.

A location using an Arrow GENSET recorded more than 66,000 hours of operation on Unit 1 and commented that in this time not one bolt had ever been removed from the unit. Operators with the company stated that they have experienced exceptional results from the Arrow GENSET, with negligible down time. Initially they used 1/3 of the unit's capacity, and planned to extend the protection range of the unit.

### LEARN MORE

As that eastern United States gas transmission company found, the Arrow GENSET is a quality cathodic protection unit for remote areas. For more information call the Arrow Engine Company Customer Service Department at 1 800 331 3662 or visit us at [www.arrowengine.com](http://www.arrowengine.com); click on the testimonial tab to view user comments about operation of the Arrow Slow Speed GENSETS and other Arrow Engine Power Products.



Engine Model	Output	Engine RPM	Alternator RPM	Fuel Required
C-46 GENSET-AC	5kw	700	1800	2.2 MCF/D
C-46 GENSET-DC	5kw	700	1800	2.2 MCF/D
C-66 GENSET-AC	7.5kw	600	1800	3.0 MCF/D
C-96 GENSET-AC	15kw	600	1800	4.7 MCF/D
C-106 GENSET-AC	25kw	700	1800	8.2 MCF/D
C-255 GENSET-AC	38kw	900	900	14.5 MCF/D
L-795 GENSET-AC	45kw	500	1800	15 MCF/D

Arrow Engine Company  
 2301 E. Independence  
 Tulsa, OK 74110  
**TOLL FREE**  
**800.331.3662**  
 Local 918.583.5711  
 Fax 918.388.3204  
 Copyright March 2009

Check for new products, catalogs, manuals and more at  
[www.arrowengine.com](http://www.arrowengine.com)